

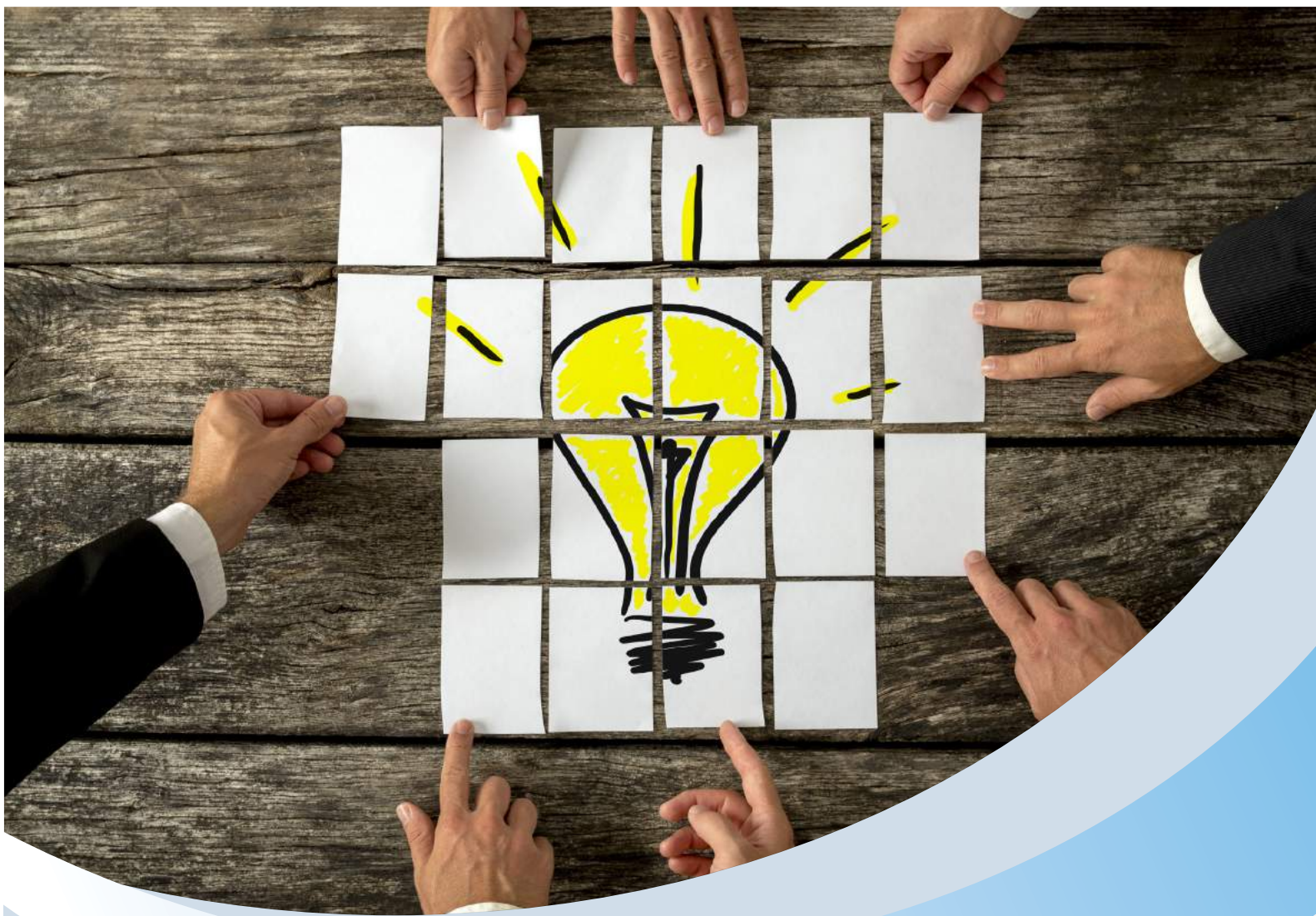
THE PROJECT ORGANIZER



PROJECT:
McLean Presbyterian Church

TABLE OF CONTENTS

- 1** | Executive Summary
- 2** | Preliminary Plan
- 3** | Conceptual Budget
- 4** | Project Schedule
- 5** | Collaboration Team



EXECUTIVE SUMMARY

MCLEAN PRESBYTERIAN CHURCH

Executive Summary : **Growing Congregation**

One of Northern Virginia's largest congregations, a healthy McLean Presbyterian Church (MPC) wanted to achieve balance in its facilities. It was determined that the ministry of the church was thriving and growing but limited by several factors. These were: limited onsite parking, space for Children's Ministry, and virtually no space onsite for Adult Sunday school.

The church used off site parking and shuttle service. Children's ministry rooms were packed and the traffic flow was difficult at best. Adult Sunday school was being held at a nearby public school which was going to become unavailable in the coming years.

Over the course of the study The Project Organizer team developed three main options that turned into one final option that solved the puzzle. The main solutions were: Leave worship space as is, build additional parking spaces, add on to the building to for a separate Children's Ministry wing, and convert much of the existing building into Adult Sunday school. The benefits of this whole campus solution are 100% of parking pulled onsite, a well organized and secure Children's Ministry wing, and all Adult Sunday school classes will be onsite. Also, gained in this approach are upgraded or reconfigured spaces for counseling, student ministry and administration.

Logistically, the project will require land use approval from the County and a phased approach to construction. The church believes that this product will produce a balanced facility.



PRELIMINARY PLAN



LOWER LEVEL

McLean Presbyterian Church
April 25, 2018



UPPER LEVEL

McLean Presbyterian Church
April 25, 2018



SITE PLAN

McLean Presbyterian Church
April 25, 2018





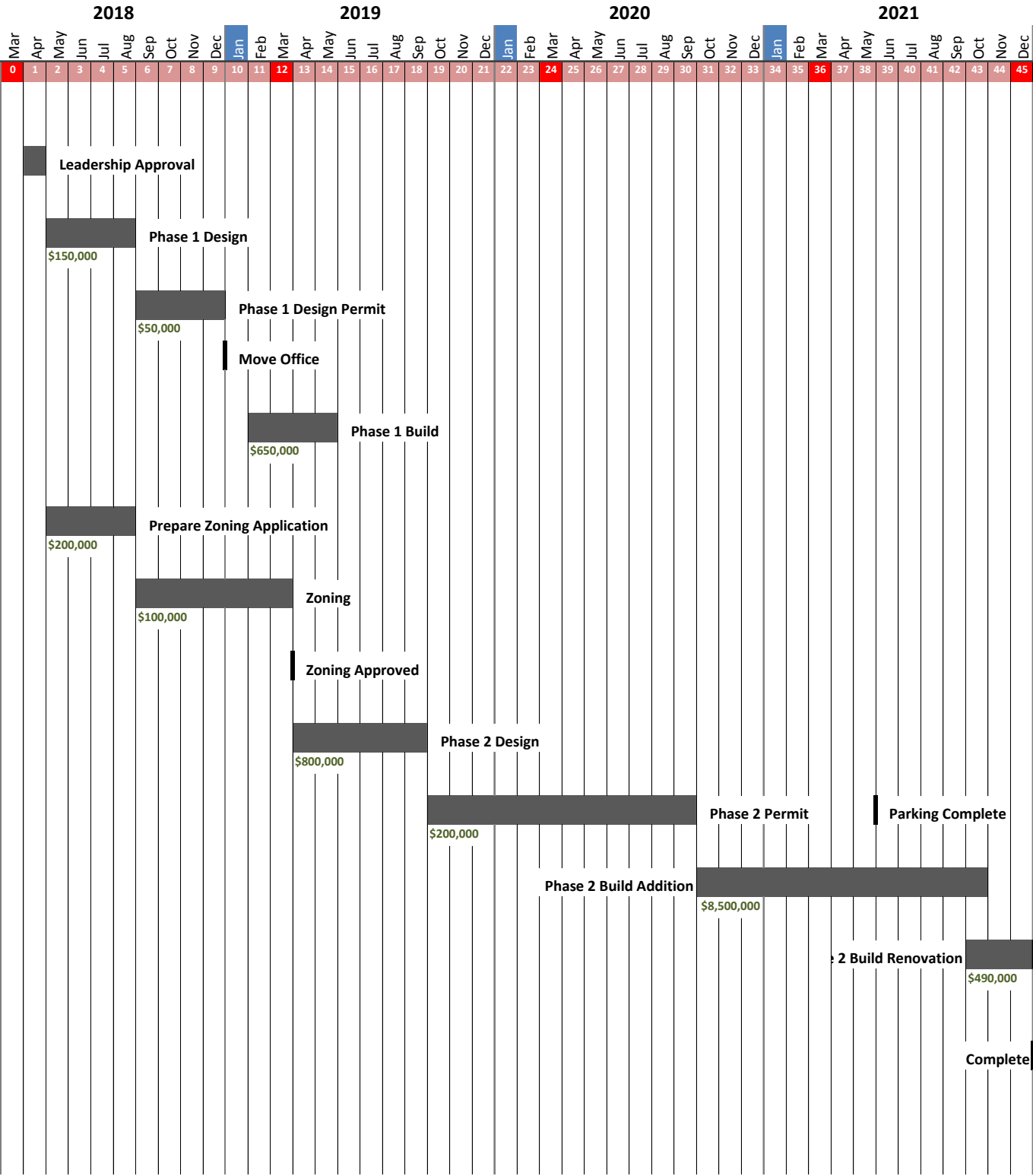
CONCEPTUAL BUDGET

MCLEAN PRESBYTERIAN CHURCH

CSI	Description
01	General Requirements
02	Site Work
03	Concrete
04	Masonry
05	Metals
06	Woods & Plastics
07	Thermal & Moisture Protection
08	Doors & Windows
09	Finishes
10	Specialties
11	Equipment
12	Furnishings
13	Special Construction
14	Conveying Systems
15	Mechanical
16	Electrical
	Direct Costs
	Builders Risk Insurance
	Liability Insurance
	Subtotal
	Contractor's Fee
	Subtotal
	Recommended Contingency
	Escalation (3 Years)
	100% P&P Bond
	Total Construction
	Soft Costs
	Total Project Costs



PROJECT SCHEDULE





COLLABORATION TEAM

SCOTT-LONG
CONSTRUCTION

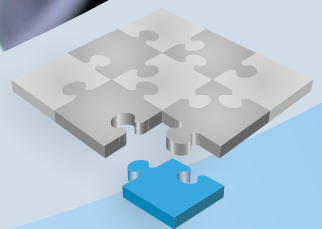
John Scott, CEO
jscott@scottlong.com
703-802-7500

BLUE RIDGE
ARCHITECTS

Randy Seitz, President
rseitz@blueridgearchitects.com
540-437-1228

WALTER L. PHILLIPS INC.

Aaron Vinson, Director of Engineering
avinson@wlpinc.com
703-532-6163



THEPROJECTORGANIZER.NET